

A | B D **AMERICAN RESIDENTIAL
DESIGN AWARDS**
August 2nd, 2025 Asheville, N.C.



2025
BEST IN SHOW
Woodlane Modern
David Charlez Designs

To see the entire entry of all of our 2025 winners, go to:

ResidentialDesignAwards.com

TABLE OF CONTENTS

GRAND ARDA WINNERS

Page 4

GLOBAL CHOICE

Page 9

ARDA WINNERS

Page 10

2025 ARDA JURY

Page 13



BEST IN SHOW

Woodlane Modern
David Charlez Designs

An official publication of the
AMERICAN INSTITUTE OF BUILDING DESIGN

The 2025 American Residential Design Awards and Gala - Asheville, North Carolina

A message from the President



Ted Hake, FAIBD

Hello everyone as we prepare to celebrate the AIBDS Diamond Jubilee anniversary, 75 years of helping residential designers become better residential designers, I'd like to thank all the members, the past presidents and board members including way back to the House of Delegates as this has got us to where we are today. And I would like to thank the present board members and committee members for taking us into our future.

As membership is the spirit of AIBD, committees are the backbone. These committees range from education, ARDA, Chapter committees to Codes and Standards with many more. The National Council of Building Design Certification (NCDBC) program provides testing for designers striving to be certified. "The CPBD certification is a benchmark certification that defines competence as a professional building designer who can visualize space – form, scale, and balance." The CPBD certification program is the oldest and most prestigious volunteer credentialing program for design professionals of one/two-family dwellings, townhouses, and light commercial buildings within the United States.

The College of fellows recognizes certified members who have "notably contribute to the advancing of the building design profession". We would like to congratulate and welcome the 2025 inductees, Kimberly Morkert, Tracy Kelly, Yu-Ngok Lo, Larry Walker and Hugh Sprague. Congratulations on achieving the highest recognized position of the residential design profession. AIBD offers scholarships including the Bill and Annette Farmer Memorial scholarship and the College of Fellows Memorial scholarship of helping future designers achieve their goals.

As president of the AIBD, I would like to encourage all members to participate by attending committee meetings, going to your chapter meetings to meet your fellow designers and most of all take pride in your work. As members of the AIBD we should follow these statements, **Our Vision** is to represent how homes are designed in America. **Our Mission** is to build a better residential design profession, one designer at a time. And finally, our **Core Values** are to Seek participation, Respect people, Deliver quality, Empower everyone, Educate each other, Contribute to the community, and Enjoy what we do.

A message from the ARDA Chairperson



Brandon Clokey

Welcome to ARDA 2025! It is indeed an honor to be the Chairperson for the program. I am always truly inspired by the work that is put into this event every single year. From the long hours that each of you have invested in preparing your entries, to the diligence of the A Team and our jury. The ARDA program only flourishes because of the hard work of so many people. My goal for ARDA has always been that it becomes an even stronger pillar of AIBD, as each year passes. The winners this year have not only proven that this is a pillar of the Institute, but the standard for how people see residential design all across our great land.

Congratulations on your achievement, It is well deserved!



GRAND ARDA CUSTOM HOMES BUILT

Mountainside Contemporary

SuCasa Design

Collaborating with DeGianni Designs

Set into a mountainside with a sweeping view of the valley below, the site called for more than just a home with windows. The plan was shaped to follow the natural contour of the slope, allowing the house to sit into the terrain rather than on top of it. That move preserved the outlook and established privacy without losing connection to the landscape.



GRAND ARDA CUSTOM HOMES BUILT

Spyglass Modern

Todd Glowka Builder, Inc.

With changing roof lines, modern design features, and impressive presence, this home will grab anyone's attention. The exterior beautifully blends blue charcoal lueder stone with scored stucco, matte black metal siding, and a matte black metal roof. The interior great room features a 20' glass sliding door and dramatic sloped ceiling with clerestory windows above. A custom kitchen and separate dining area with adjoining covered patio are perfect for entertaining family and friends.



GRAND ARDA CUSTOM HOMES BUILT

Sunset on the River

David Charlez Designs

Collaborating with Leona Rose Interiors

With sweeping sunset views that light up the horizon each evening, the exterior showcases a harmonious mix of brick, stone, warm wood accents, sleek black windows, and standing-seam metal roofs. Large glass expanses invite the outdoors in, while the home's architectural balance of natural materials and clean lines creates a striking, timeless presence against its scenic backdrop.



GRAND ARDA CUSTOM HOMES BUILT

Timeless Tranquility

Total Solutions Group

Collaborating with Laura Wasden

Timeless Tranquility was designed to blend modern Florida elegance with functional family living. The primary objective was to create an expansive, open-concept home that fosters seamless indoor-outdoor living while maintaining a sense of privacy and tranquility. The 12' ceilings and walls of glass maximize natural light, visually extending the interior to the outdoor courtyard and pool, creating a resort-like retreat.

GRAND ARDA CUSTOM HOMES UNBUILT

Arcadian Estate

Total Solutions Group

The designer used fifteen degrees as the factor to rotate sections of the design and utilized discipline to maintain symmetry and respect the classical Mediterranean roots that inspired the design. A wide transversal gallery and Main Hallway separate the Foyer and Great Room, creating artistic sight lines to each end of the gallery. The kitchen is positioned to support the adjacent café, club room, and formal dining room. The Owner's Suite, features a view of the golf course across a Private Porch.



GRAND ARDA CUSTOM HOMES UNBUILT

Feather Point House

Larry Tindall Residential Design

Within the Main House, the Great-room features a multi-screen media entertainment center. The Formal Dining has a refrigerated Wine Wall. The Kitchen provides custom appliance panels and appliance garages. A Service Kitchen is also provided for large party entertaining. The Kitchen Nook has a large awning-type window allowing bar-type seating to the Outdoor Kitchen. In the heart of the home, there is an open-sky Atrium allowing natural light throughout the space.

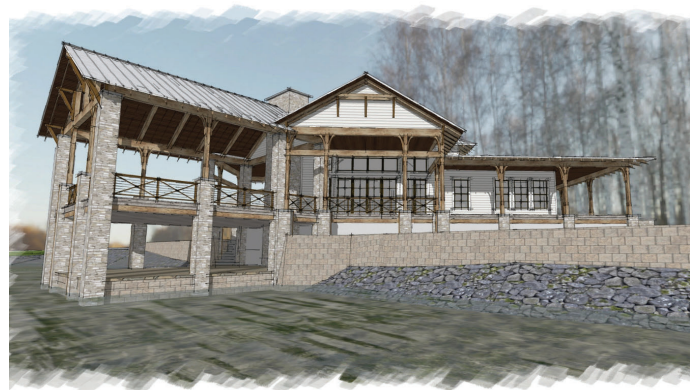


GRAND ARDA CUSTOM HOMES UNBUILT

Hearthstone Retreat

Total Solutions Group

The home's design is a basic square with a bisecting diagonal through the large volume of the Great Room. The two ends of the diagonal are the Front Entry/ Portico and the large Outdoor Living Porch. The sightline through the home directly faces the mile-long view of the prairie. The house is positioned to view across the lake and prairie to the trees beyond. The tree line is one mile from the porches and hosts some of the most spectacular sunsets.



GRAND ARDA CUSTOM HOMES UNBUILT

Woodlane Modern

David Charlez Designs

This striking three-level modern home spans 6,300 finished square feet and showcases a bold architectural design with clean lines, flat roofs, and a sophisticated exterior blend of stone and James Hardie siding. Expansive windows flood the interior with natural light and offer panoramic views from nearly every room. The main level is anchored by a dramatic glass wall lounge and open-concept living spaces with soaring ceilings and clerestory windows. The private upper level is designed with two spacious bedrooms.





GRAND ARDA MODEL HOMES UNBUILT

The Oakhaven

SuCasa Design

Inside, the plan balances openness with structure. Spaces are connected but not undefined. There's a clear sense of flow without leaning too formal or too relaxed. A main floor primary bedroom takes advantage of the view and supports easy daily living. The lower level is designed for summer use, with access to the pool, a rec area, gym, and a spa-style bath that serves both the basement and pool users. This level was designed to adapt—its right side can be easily reconfigured into a one-bedroom suite if desired.



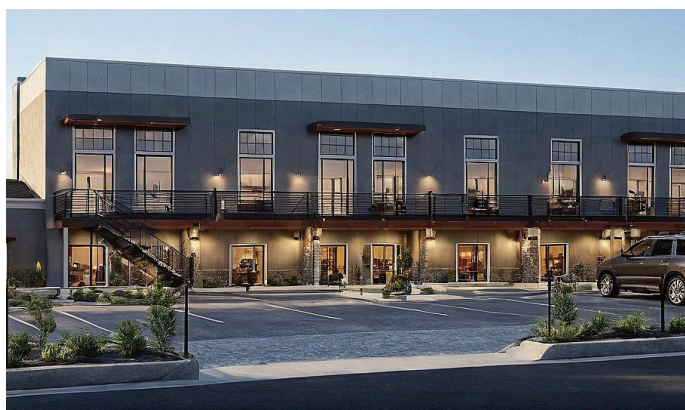
GRAND ARDA RENOVATION BUILT

ModHaus Makeover

Pippin Home Designs

Collaborating with Kristina Taylor-Lewis with Honeycomb Design Collective

ModHaus Makeover is a transformation project that reimagined a modest, dated brick ranch into a striking modern lakefront retreat. The home—originally defined by its low-pitched gable roof, multi-sided masonry fireplace, and segmented floor plan—sat on a beautifully landscaped lot with lake access but offered minimal visual or functional connection to the outdoors.



GRAND ARDA RENOVATION BUILT

TOURO STREET RENOVATION

Catanzaro Design Group

Located in a mix of multifamily, commercial and industrial neighborhood. The goal was to create six small but, functional and stylish, modern affordable apartments while maintaining the structures original early 20th century construction practices with a fresh modern minimalist / industrial aesthetic incorporating contemporary comforts with onsite laundry, green space and shared outdoor recreational area.



GRAND ARDA DETACHED MULTI-DWELLING

Raintree

Ahs Design Group

Collaborating with Topo Collective

This beautifully crafted 2, 491-sqft and 1,200 sqft modern Tudor homes inspired combine timeless elegance with thoughtful modern design. The homes offer a serene retreat while keeping you close to the city best amenities. Both houses are ideal for both relaxed living and vibrant entertaining. Pass through a portal of graceful archways into a stunning living room with soaring 15-foot ceilings, bathed in natural light from expansive windows.

GRAND ARDA OUTDOOR LIVING

Grand Lakeside Lanai Living

Phil Kean Design Group

At the heart of the project lies the expansive lanai—a stunning architectural element that does far more than connect the main home to the detached guest quarters. Spanning over 4,000 square feet of covered living space, this breezy, open-air environment blurs the line between indoors and out. With full-height sliding glass walls on either side, the main home and guest apartment can open to the lanai, while framing uninterrupted views of both the pool and lake beyond.



GRAND ARDA OUTDOOR LIVING

Spyglass Modern

Todd Glowka Builder, Inc.

This home sits high atop its private cul-de-sac. All front landscaping was designed with a terracing effect, to draw one up and into the entry of the home. Multiple front-facing patios will serve as the perfect location to enjoy a morning coffee or evening cocktail perfectly match with the hill country views. The rear space serves as a private oasis for these clients. A bocce ball court and putting green for entertainment, the pool and fire pit for relaxation.



GRAND ARDA WORKING DRAWINGS

Creek Side Heaven

FLORIDA BUILDING PLANS

Collaborating with Lever David Perez, David Rosero,
Pedro Del Pino, Oscar Mora

Crafted as a single-story home that fuses ranch style warmth with contemporary clarity, the residence unfolds across a carefully considered floor plan. The great room with its soaring 16-foot ceiling forms the heart of the home, ending in a dramatic niche where a bar anchors the space. The kitchen invites connection around a six-seat island, designed with entertaining in mind.



GRAND ARDA WORKING DRAWINGS

Steps to the Beach

Total Solutions Group

Collaborating with Laura Wasden

Steps to the Beach was designed for an empty-nest couple seeking a refined coastal retreat that embraces music, literature, and the natural rhythms of oceanfront living. Located within an intimate seaside community—but not on a beachfront lot—the home was carefully positioned to capture sea breezes and framed glimpses of the ocean, particularly from the elevated rear balconies and the third-floor library.





GRAND ARDA DESIGN FEATURE

Meyer Custom Home

The Design Office LLC

A custom home design for a neglected lot filled with rock outcropping. I focused on creating a special entry, open to a large living area, flowing out to a backyard & mountain view. The unique windows & door placement also contributed to this rhythm. The bedroom & kitchen wings were placed as bookends to the center space, to bring attention to the entrance almost like large canyon walls would do. The second-floor floats & cantilevers in place to give a sense of shelter.



AMERICAN RESIDENTIAL DESIGN AWARDS

The American Residential Design Awards (ARDA) is the American Institute of Building Design's premier award program exhibiting design excellence in the residential building industry. It spotlights the nation's most creative and innovative residential designers, builders, remodelers, architects, developers, land planners, and interior designers. Every year, the awards program recognizes exceptional design in custom, builder models, pre-drawn and multifamily homes of all types and sizes, remodeling, working drawings, and projects "on the boards." As a leader in home design recognition, the ARDA program has grown over the years to include categories in green building, outdoor living, and accessible living.

ARDA is an awards program, not a design competition. Therefore, entries are not grouped in square footage or project value classifications. Judging is conducted by a panel of residential design and construction experts based on the quality of the entry and not compared to others in a category. However, one or more ARDA winners may be recognized as the overall best in their category.

All residential industry professionals are eligible to enter individual or collaborative projects. Entries previously submitted to ARDA are still eligible, provided they haven't yet won recognition in the same category. Entries may be entered in multiple categories (e.g., Custom Homes and Green Design), and all completed projects are eligible regardless of completion date.

AMERICAN RESIDENTIAL DESIGN AWARDS

GLOBAL CHOICE CANDIDATES



Mountain Cabin
Hindsite Design



Raising Heights
AIS Designs co.



Texas Hill Country Modern
J Edwards Home Designs LLC



The French Mansion
Flintrock Builders

The **Global Choice** category is an open category of constructed projects to be viewed and voted on by the general public and AIBD Professional members. There will be paid promotion on social media, and AIBD Professional members will be sent individual judging invites, but for the most part, each entrant will be responsible for soliciting their own votes. Voting is limited to one vote per device. However, multiple votes may be generated from the same IP address. Such as from within a large company using the same internet server/router.

AMERICAN RESIDENTIAL DESIGN AWARD WINNERS

CUSTOM HOMES (Unbuilt)

Azure Residence

Charenton Design Studio

Brunswick Residence

YNL Architects

Casa de Corgi

Art Village LLC

Golf View Mountain Prairie

42° North Architecture + Design

Hilltop Transitional Modern

42° North Architecture + Design

Ibiza

Windstar Homes

Lake House Doral

Forma Design Studio

Modern Prairie Fusion

Fry Design Co.

Mountain Casual Retreat

Residential Designed Solutions

Northpoint

Design Elite Architects

Ponte Vedra

Windstar Homes

Reflections

Cornerstone Home Designs

Smithtown

David Charlez Designs

AMERICAN RESIDENTIAL DESIGN AWARD WINNERS

CUSTOM HOMES (Unbuilt)

The Bridal Gate

Cook Design Studio, Inc.

Verdant Horizon House

Delineations Incorporated

Verto Ridge

Living Stone Design + Build

Waterfern Design

Elite Architects

平和と繁栄

Heiwa to han'ei

Cornerstone Home Designs

AMERICAN RESIDENTIAL DESIGN AWARD WINNERS

PUBLISHED DESIGN

Bolton House

Royal Oaks Design

Elm Springs

Royal Oaks Design

Living BIG in a Small Town

Fry Design Co.

The Cheshire

Residential Designed Solutions

The Wellington

Su Casa Design

Wakefield

Hudson Home Designs

AMERICAN RESIDENTIAL DESIGN AWARD WINNERS

MULTI-FAMILY (Unbuilt)

Pittman Street

Catanzaro Design Group

Sett Triplex

Barron Custom Design

The Monarch II

Design Winter Park, Inc.

AMERICAN RESIDENTIAL DESIGN AWARD WINNERS

OUTDOOR LIVING

Ibiza

Windstar Homes

Jefferson Davis Avenue

Cook Design Studio, Inc.

Luxury by the Lake

Flintrock Builders

AMERICAN RESIDENTIAL DESIGN AWARD WINNERS

RENOVATION (Unbuilt)

Contemporary Comfort

Residential Designed Solutions

Midcentury Expansion

Habitations, LLC

Mission Modern

42° North Architecture + Design

Modern Family

Total Solutions Group

**AMERICAN RESIDENTIAL
DESIGN AWARD WINNERS**

RENOVATION (Built)

Barton Hills Residence

3 Fold Design Studio

Legacy Farmhouse

Residential Designed Solutions

Pine Forest

RS Whitaker Inc.

**AMERICAN RESIDENTIAL
DESIGN AWARD WINNERS**

DESIGN FEATURE

Blue Ridge Farmhouse

Fry Design Co.

Spyglass Modern

Todd Glowka Builder, Inc.

Spyglass Modern

Todd Glowka Builder, Inc.

Where Earth Meets Structure

Semmes & Co Builders, Inc

**AMERICAN RESIDENTIAL
DESIGN AWARD WINNERS**

CUSTOM HOMES (Built)

Brush Creek English Modern

Living Stone Design + Build

Casa Bonita

Living Stone Design + Build

Casa Del Sol

Pippin Home Designs

French Country Modern

Kelley Design Group

Gonzales

Ahs Design Group

Grand Lakeside

Phil Kean Design Group

Isla Vista

Chatham Home Planning

Legacy Point

Total Solutions Group

Meyer Custom Home

The Design Office LLC

Modern Lakefront Home

Kg3d Home Design LLC

Mount Vernon Cottage

Ahs Design Group

Ocean Haven

Jenny Miller Design

Oceanfront

Jenny Miller Design

**AMERICAN RESIDENTIAL
DESIGN AWARD WINNERS**

MODEL HOMES (Built)

Bold Modern Elegance

TR Design Group

Elmwood Place

Walker Associates

Urban Oasis

Total Solutions Group

**AMERICAN RESIDENTIAL
DESIGN AWARD WINNERS**

DETACHED MULTI DWELLING

Lowcountry Maggie

Cornerstone Home Designs

**AMERICAN RESIDENTIAL
DESIGN AWARD WINNERS**

CUSTOM HOMES (Built)

“A”mazing Cottage

J Edwards Home Designs LLC

28 Day Waterway Wonder

JDS Consulting

Acadian Cottage

Chatham Home Planning

Apache

Ahs Design Group

Bellevue Estate

Su Casa Design

**AMERICAN RESIDENTIAL
DESIGN AWARD WINNERS**

INDOOR LIVING

Legacy Farmhouse Kitchen

Residential Designed Solutions

Ponte Vedra

Windstar Homes

AMERICAN RESIDENTIAL DESIGN AWARD WINNERS

CUSTOM HOMES (Built)

Old Towne Lane

Houseplans.Guru

Panorama Residence

Art Village LLC

Piney Point's Estate

AIS Designs co.

Reserve Lane

Jenny Miller Design

Site Surmounted

TR Design Group

Stonewall Residence

3 Fold Design Studio

Summer House

Pippin Home Designs

Summer Lane Cottage

Chatham Home Planning.

Sunny Side

Pippin Home Designs

Sweet Fern

Design Elite Architects

The Lookaway Elegance

AIS Designs co.

The Newington

RMB Building & Design, LLC

Wright Residence

Walker Associates

AMERICAN RESIDENTIAL DESIGN AWARD WINNERS

WORKING DRAWINGS

"Charming House on a Hill"

YOUNG ENTERPRISES

Design Studio

Belle Terre

Cook Design Studio, Inc.

Fleming Retreat

Cook Design Studio, Inc.

King Square

Cook Design Studio, Inc.

Mountain Casual Retreat

Residential Designed Solutions

Sunset Ave

Jenny Miller Design

Tavares Residence

Planning, Design, & Mgt. Solutions

Vineyard Renovation

Habitations, LLC

West Main

Cook Design Studio, Inc.

White Bear Residence

Royal Oaks Design

Working Drawings-Whole Home

Nicholas Design Build

Our History

Since 1950, the American Institute of Building Design (AIBD) has been supporting building designers with educational resources, design standards, and a professional code of ethics. Recognized nationwide, AIBD promotes the building design profession through advocacy, public awareness, and education about new materials and technologies shaping the future.

To meet evolving industry needs, AIBD established the National Council of Building Designer Certification (NCBDC), which oversees the Certified Professional Building Designer (CPBD) program. This certification is the gold standard for building designers, architects, and engineers, showcasing expertise and commitment to ongoing professional development.

To earn the CPBD credential, candidates must have at least six years of design experience, demonstrate a commitment to continuing education, and adhere to AIBD's ethics and standards. This certification highlights professional excellence and expertise in residential and light-frame building design, making it the only nationally recognized program of its kind.

For over 40 years, the NCBDC has been helping designers demonstrate their skills and gain recognition for their professional capabilities. Whether you're an AIBD member or not, achieving CPBD certification is a mark of true design expertise.



The 2024 American Residential Design Awards Jury



VIKI WOOSTER

Ms. Wooster is a Certified Professional Building Designer (CPBD) with a career spanning over 35 years. Known for her dedication to the profession, Viki's accolades include several national design awards that reflect her unwavering commitment to excellence. With the honor of having served as Past National President for the American Institute of Building Design (AIBD) and being a current member of the AIBD College of Fellows, her expertise is recognized at the highest levels. She is passionate about continuing education, updating her knowledge in design, building science and related fields, and has earned the designation of Sustainable Homes Professional (SHP). Viki has served as a judge for the ARDA program twice previously, and is known for her thorough observation of the qualities of good design that make for an award-worthy entry.



BERNIE KERN

Mr. Kern is the principal owner of BBKern DESIGNS, Bernie Kern has developed code approved working drawings for new custom and model residential homes, multi-residential, additions, remodels, and light commercial projects for nearly 35 years. He assists clients in all stages of building design, including planning, design fees, budget, education, specifications, special services, and consultation. Over the span of 35 years he has collected his best residential plans. As a professional member of AIBD, Bernie was AIBD's President from 2020-2022, 2018 Designer of the Year, Certified (CPBD) and inducted in the AIBD College of Fellows.



BRUCE YANCEY

Mr. Yancey has devoted the majority of his life to design. As a well respected CPBD and member of the College Of Fellows, he is also a member of the OKBDC, and a licensed Oklahoma Commercial Interior Designer. His illustrious 50 year career in education has included the Autry Technology Center in Enid OK., Moore Norman Technology Center, Norman OK., and Oklahoma State University, Oklahoma City. It is there that he also holds the title of Professor Emeritus. Mr Yancey has also served as the Department Head and Division Head ITT Technical Institute Oklahoma City. In the midst of this career, He also authored several books on the topic of drafting. Some of his past memberships include: ADDA-NFPA-ASME-SME-NASA-ASTM-American Society of Heating, Refrigeration, and Air Conditioning Engineers.



CORINNE MATTHEWS

Ms. Matthews is the owner and principal interior designer for Dream Room Designs, LLC which was established in 2007. She is known for her cutting edge and innovative approach to design. She skillfully transforms ordinary spaces into her clients' dream rooms. Her background, education, and experiences have enabled her inherent understanding of space, color, design, and style that translates into every project. Dream Room Design's projects have included single family homes, condominiums, builder spec-homes, model homes, and office spaces. These projects incorporate practices to reduce operating expenditure for energy, reduce maintenance costs, produce healthier environments, improve production, air circulation, acoustics, and reduce water usage. Corinne has been recognized for her work in Atlanta, New York, California, Florida, North Carolina, and Texas.



KYLE ASHWORTH

Mr. Ashworth is a real estate developer in the Intermountain West, specializing in resort communities and high-end residential developments. With decades of experience, his private firm manages land acquisition, entitlements, design, and construction, delivering exceptional communities that blend luxury with their natural surroundings. His innovative approach leverages global manufacturers and industry leaders to create standout residential and commercial buildings. His keen design sense and commitment to sustainability ensure projects are functional, visually striking and environmentally responsible—setting a high standard in the real estate development industry.

The 2025 American Residential Design Awards Staff

Brandon Clokey

American Residential Design Awards Chairperson

Steven Mickley

AIBD Chief Staff Officer

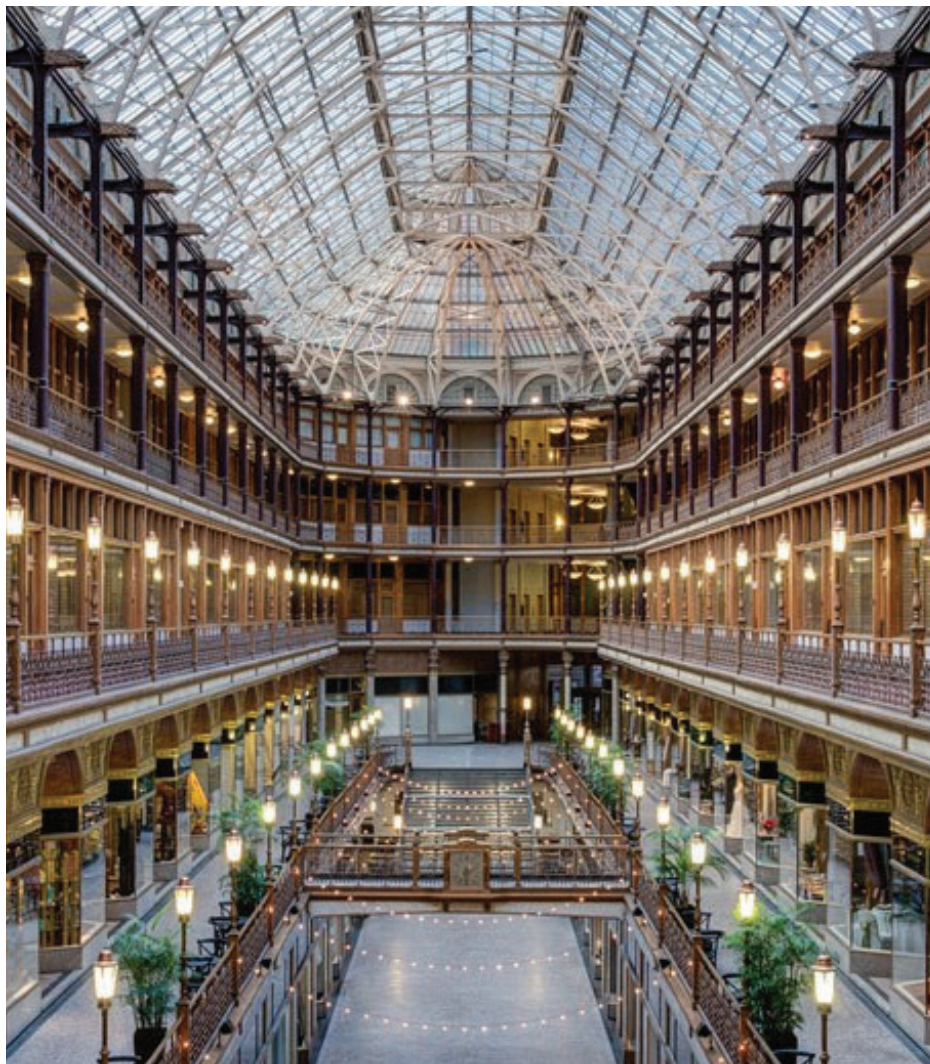
Garrett Mickley

AIBD Communications Director

Allen Beaumont

Master of Ceremonies

Design+Build 2026



Cleveland, Ohio

2025-2026 BOARD OF DIRECTORS

Ted Hake
President

Brandon Clokey
Internal Vice President

Jack Butler
External Vice President

Larry Walker
Treasurer

Dennis Fletcher
Secretary

Joey Martin
Director

Scott Cook
Director

Nick Smith
Director

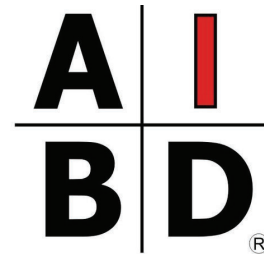
Jeff Fry
Director

Lyle Breeze
Director

John Fought
College of Fellows

Ben Tabolt
Immediate Past President

Bernie Kern
NCBDC



AMERICAN RESIDENTIAL
DESIGN AWARDS

Saturday, August 2nd, 2024
ASHEVILLE, NORTH CAROLINA

To see the entire entry of all of the 2025 winners

ResidentialDesignAwards.com

A | I
B | D **AMERICAN RESIDENTIAL
DESIGN AWARDS**
August 2nd, 2025 Asheville, N.C.



2025
Global Choice
Raising Heights
AIS Designs co.